

ADEME



Agence de l'Environnement
et de la Maîtrise de l'Energie

Club ADEME
International

altereo



District Autonome d'Abidjan

Supply and set up of a Collective Wastewater and Sanitation GIS in Cloud Mode within the Framework

of the Study for Upgrading the Sanitation and Drainage Master Plan of Abidjan District



Côte d'Ivoire



Intervention time
2019 (3 months)



Total cost
45 k€



Engaged workforce
GIS expert
GIS trainer

Thematic



Prestations provided

Services
Engineering

Following a C2D (French Development Agency) financed project, carried out with the objective of upgrading the Sanitation and Drainage Master Plan of Abidjan District, a GIS was developed for the District. This GIS takes into account all pertinent data related to the upgrading.

However, this GIS can also be shared with other relevant actors such as the ONAD (Sanitation Department) and the SODECI (National Water Distribution Company), in order to have an operational database that can be regularly updated.

In order to better manage the updates, to have greater visibility over the use of the GIS, to properly organize the exchange process with respect to data update and modification, the DAUD awarded the contract for the implementation of the GIS KIS® in Cloud Mode. This format renders the system accessible to all project actors via internet/intranet.

Post-realization results

Following service provision, the following outcomes can be expected :

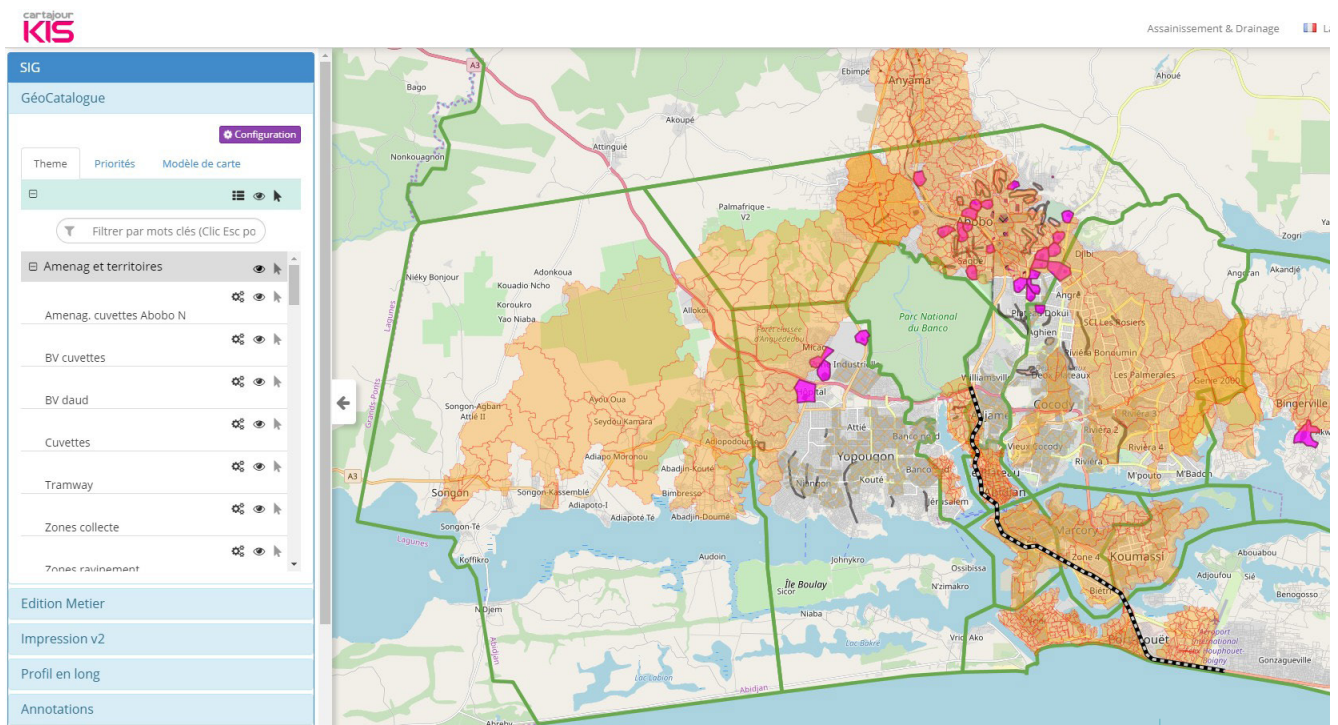
- A sector-specific GIS hosted via Cloud
- The solution will be adapted to the sector
- The solution will allow data exchange in shapefile formats and allow interfacing with other information systems via webservices
- Connection with different sites will be carried out with a complete management of user profiles and rights within the platform
- Data and maps will be accessible through all platforms - PC or mobile
- All relevant personnel will be trained in the management and command of the Web-GIS
- The solution is available 24/7

All information is automatically saved and secured

Environmental impact



The implementation of a sanitation GIS should significantly improve the public management of wastewater: the collection and treatment of wastewater, the quality of discharges into the natural environment, the avoidance of malfunctions such as clogging or overflows that can accidentally pollute the natural environment and groundwater.



© ALTEREO

With more than 130 members, the Club ADEME International assists the SMEs in its network in the development of innovative projects and international partnerships. The objective is to participate in the dissemination of French knowledge, by supporting the private and public sector in the ecological and energy transition sector in order to meet global environmental and climate challenges.

More information : www.clubinternational.ademe.fr



Club ADEME International | Exemplary project file - June 2020

#clubademeint